



STUDIO 212

a natural light photography studio
available for daily + weekly rental

1250 Missouri Street, No 212
San Francisco, CA 94107

415.495.0930 studio
studio@annabellebreakey.com



ANNABELLE BREakey PHOTOGRAPHY STUDIO 212

A beautiful light-filled space with gourmet kitchen that is a pleasure to work in.

1200 sq ft

One 14' x 14' Windows, Facing West

One 6' x 6' Window, Facing North

Gourmet Kitchen

Professional Grade Cooktop & Oven

Counter Depth French Door Refrigerator/Freezer

Espresso Machine

Speed Rack

Dishwasher

Comfortable Client Area

Sonos Sound System

Wireless Internet Access

Loading Dock/Freight Elevator

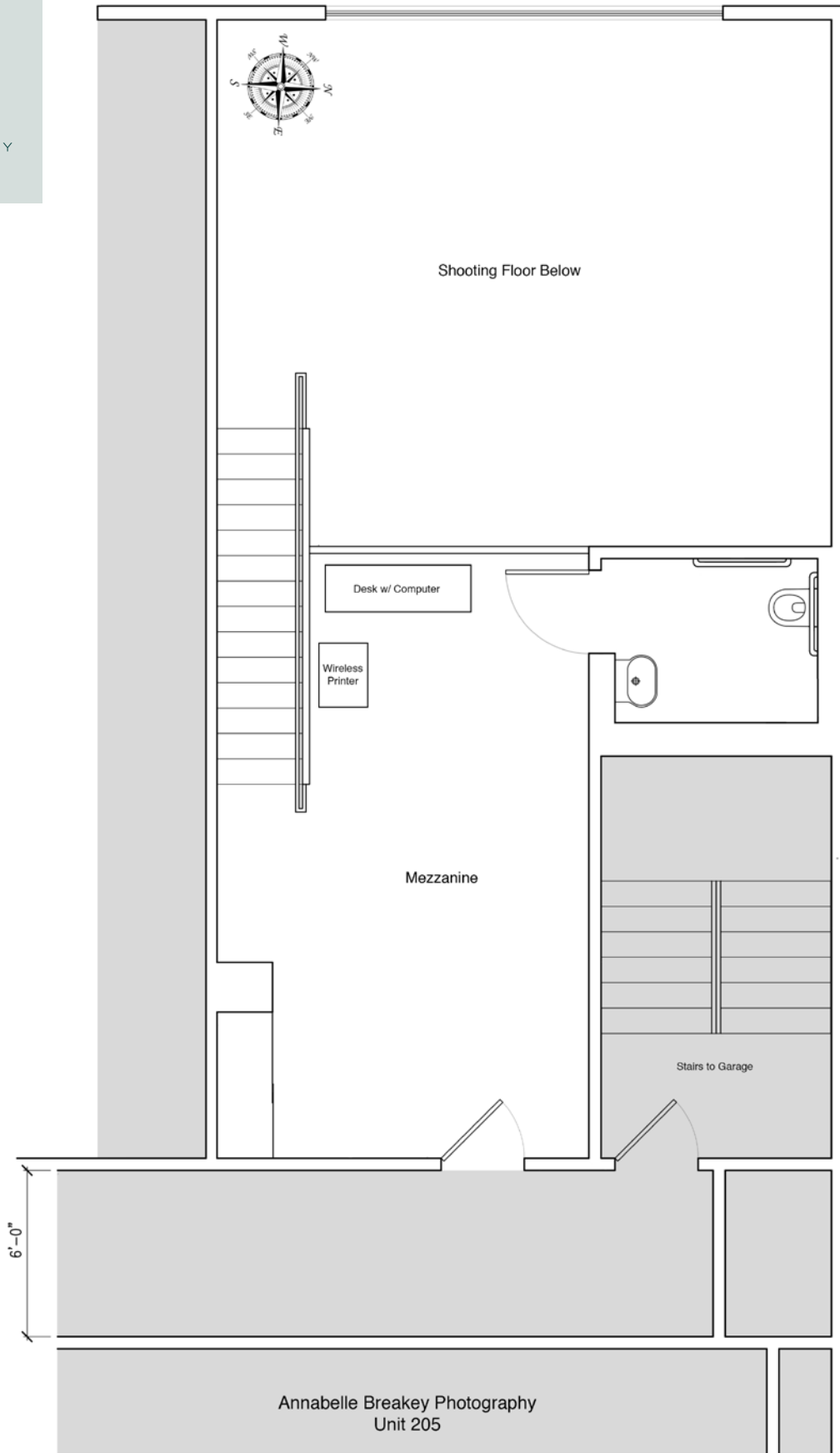
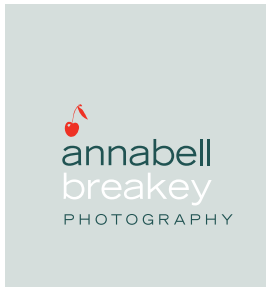
Off Street Parking for 1

All Day Street Parking Nearby

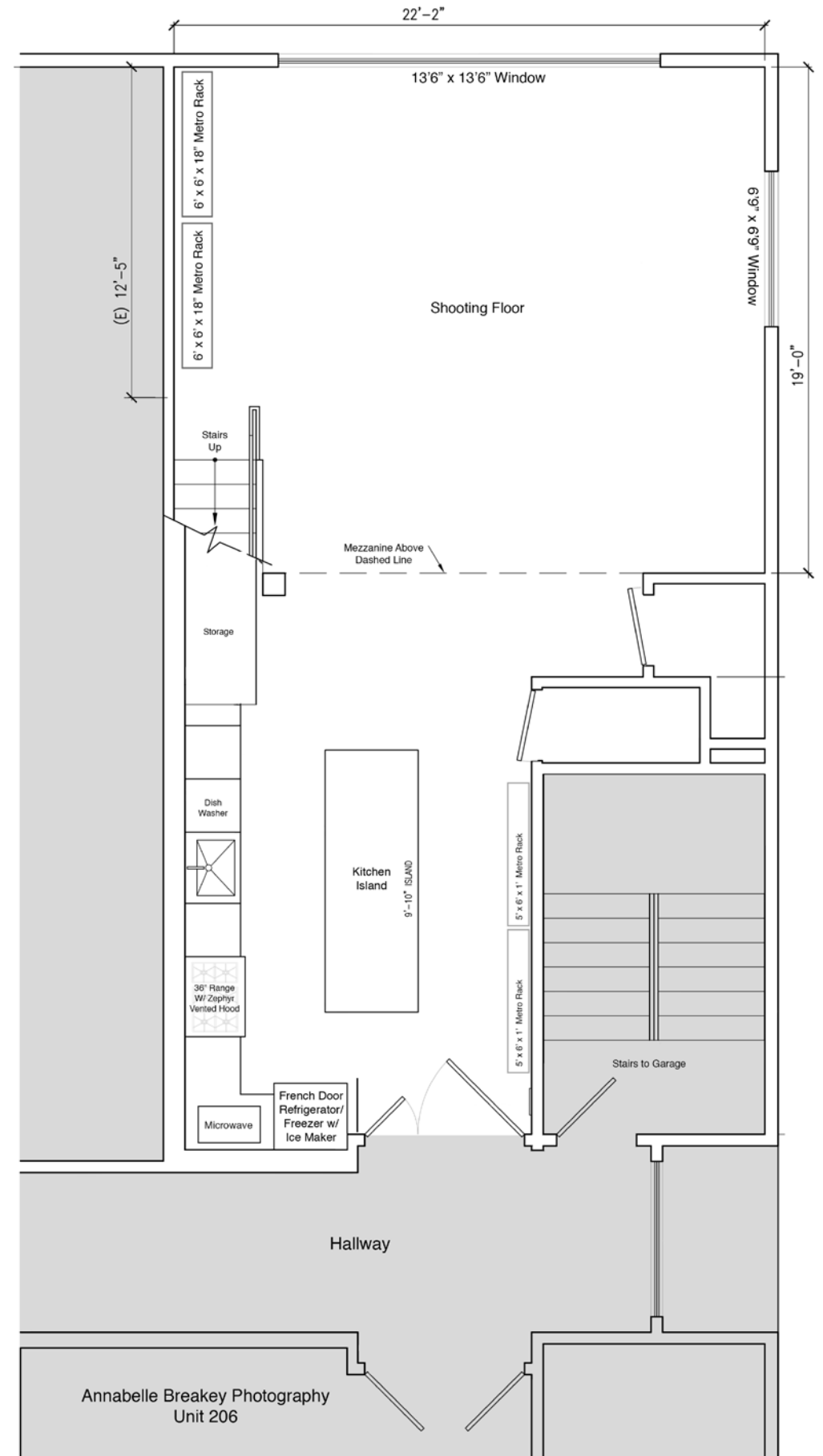
Grip Package Available



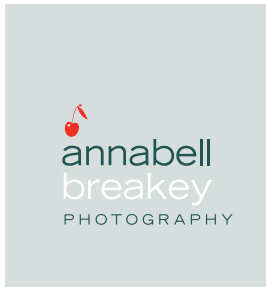




MEZZANINE LEVEL



MAIN LEVEL



THANK YOU

ANNABELLE BREAKEY PHOTOGRAPHY

1250 Missouri Street, No 212

San Francisco, CA 94107

415.495.0930 studio

studio@annabellebreakey.com